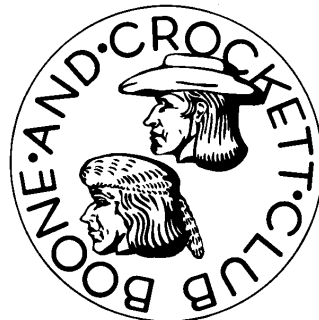


# Montana High Adventure Base

## LEADERS INFORMATION

Revised: MOHAB Treks 2012



Prepared by the Boone and Crockett Club Staff MOHAB Team  
Great Falls Area Council High Adventure Committee  
Jack Sherick, Committee Chairman

Table of Contents

Executive Summary \_\_\_\_\_ 1

- Purpose ..... 1
- Location ..... 1
  - High Adventure Base ..... 2
  - Conservation and Wildlife Program ..... 2

Program \_\_\_\_\_ 3

- Overview..... 3
- Crew Size ..... 3
- Travel Arrangements ..... 3
- Arrival ..... 3
- Proposed Itineraries..... 4
- Trek Table: 5 - Day ... 4 ½ - Day ... 4 -Day ..... 5
- Trek Dates ..... 6
- Jump Start Programs ..... 6
- Base Camp Programs and Optional Training ..... 7
- Meals ..... 8
  - Overview ..... 8
  - Base Camp Meals..... 8
  - Trail Meals ..... 8

Logistics and Planning \_\_\_\_\_ 8

- Boone & Crockett Contact Information ..... 8
- MOHAB Coordinator for Great Falls Area Council BSA **Error! Bookmark not defined.**
- Great Falls Area Council Contact Information ..... 9
- Governmental Entities..... 9
- Transportation..... 9
- Recommended Travel Itinerary ..... 100
  - Layover / Plane Transfer ..... 100
  - Sample Itinerary ..... 11

Base Camp Program Offerings \_\_\_\_\_ 11

- Tracks, Scat and Sign..... 11
- Furbearers of the Rocky Mountain Front..... 122

Shooting Sports ..... 12  
Plant Identification ..... 122  
Conservation Project..... **Error! Bookmark not defined.**2  
Other Opportunities near MOHAB \_\_\_\_\_ 134  
    Glacier National Park ..... 134  
    Museum of the Plains Indians ..... 134  
    Lewis & Clark Interpretive Center..... 134  
    Waterton Provincial Park ..... 134

## Executive Summary

---

### Purpose

The purpose of this document is to provide information for adult leaders about the Boone and Crockett Club's (B&C) Theodore Roosevelt Memorial Ranch (TRMR), the Elmer E. Rasmuson Wildlife Conservation Center (RWCC) and surrounding wilderness areas as a high adventure destination for Scouts and adult leaders in the Boy Scouts of America.



Fig 1: 6,000-acre Theodore Roosevelt Memorial Ranch - Dupuyer, Montana

### Location

TRMR or The Ranch as it is affectionately called by B&C members is a 6,000 acre facility that lies in the foothills of the east slope of the Rocky Mountains near the small town of Dupuyer, Montana. The property abuts hundreds of thousands of acres of national forest and wilderness which contains prime habitat for elk and mule deer. Additionally, whitetail deer, cougar, and grizzly and black bears regularly use this property and bighorn sheep and Rocky Mountain goats occur in adjacent national forest lands.

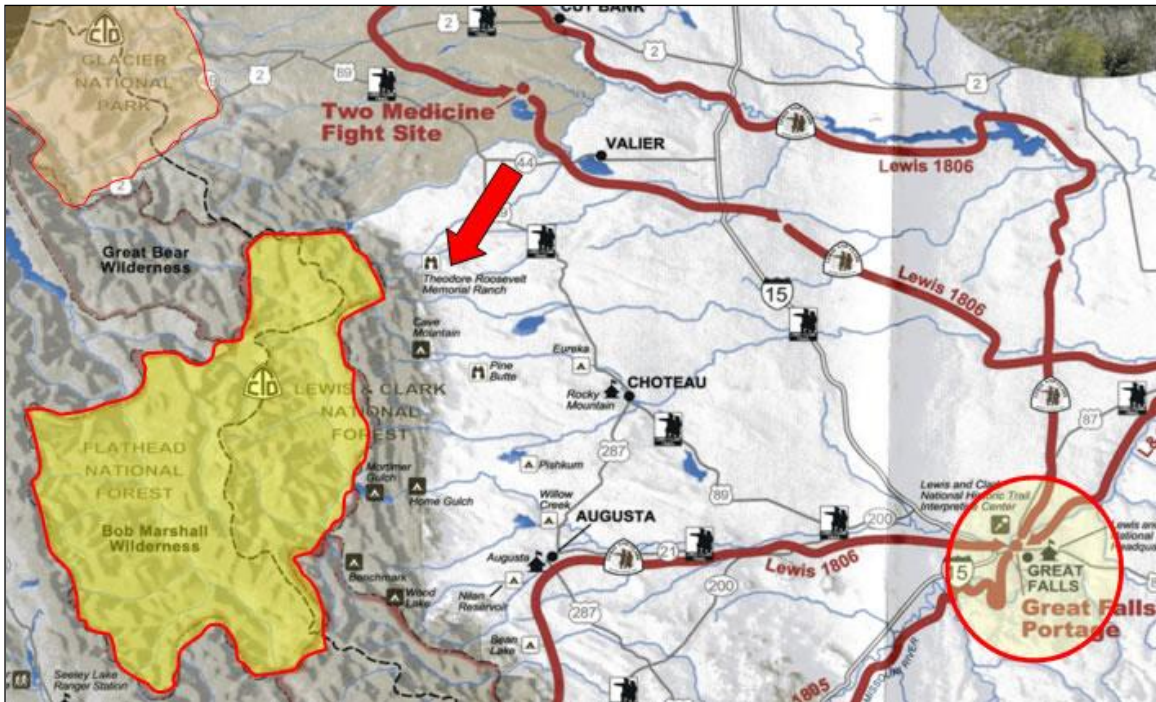


Figure 2: TRMR and Surrounding Wildernesses in North-Central Montana

### High Adventure Base

The Ranch serves as the base of operations for MOHAB - “**M**ontana **H**igh **A**dventure **B**ase”; the name established by the High Adventure Committee for this location. Similar to Philmont, crews would depart the base for pre-established treks into the Bob Marshall Wilderness, a 1,009,356 acre wilderness located in Northern Continental Divide Ecosystem of Montana approximately 100 miles west of Great Falls. The "Bob" straddles the Continental Divide with elevations ranging from 4,000 feet along the valley floors to more than 9,000 feet at mountain summits. This vast Wilderness is seven (7.34) times larger than Philmont (137,493 acres) with established trails. Trailheads to the “Bob” are within walking distance or a short drive from the Ranch property.

### Conservation and Wildlife Program

The wildlife conservation education programs at the Elmer E. Rasmuson Wildlife Conservation Center (RWCC) are available to units as part of the overall outdoor experience before or after a high adventure activity. The center has a wildlife laboratory that can support many field-based conservation and wildlife merit badge programs.

## Program

---

### Overview

The MOHAB program is an eight-day program that includes an introduction to the surrounding environment (The Front Range, Bob Marshall Wilderness), pre-trek training, and a 5-day or 4 ½-day or 4-day trek. The trek lengths are dependent on program options that each crew selects as part of their overall trek program. Crews will arrive on a Thursday and depart the following Thursday or arrive on a Saturday and depart the following Saturday. Schedules vary please refer to the MOHAB website [www.montanahighadventurebase.com](http://www.montanahighadventurebase.com)

### Crew Size

Due to the remoteness of the wilderness in northwestern Montana, MOHAB crew size is 10 to 13 people including adult advisors. This standard will be strictly enforced. Each crew is required to have a majority of youth participants with the maximum number of adults (over 21) is four per crew. However, the minimum number of adults (over 21) for MOHAB treks will be three (3).

Units registering for MOHAB treks will be notified in writing about the 3-adult requirement. The minimum adult requirement (3) will be strictly adhered to.

### Travel Arrangements

Travel arrangements to Great Falls, Montana will be the responsibility of each crew. It is highly recommended that crews headed to MOHAB for summer 2011 contact either United Airlines or Delta Airlines to arrange travel. However, lower rates may be found using on-line travel services like Orbitz, Travelocity, etc.

Crews driving to MOHAB should plan on arriving no later than 5:00 p.m. on the first day. If arriving later prior arrangements must be made with the base camp staff.

The Theodore Roosevelt Memorial Ranch (MOHAB) is 8 miles west of Dupuyer, Montana. It is approximately a 2 hour drive from Great Falls International Airport. Crews will be met by MOHAB representatives at the airport to transport personnel and equipment to MOHAB.

The MOHAB program will provide bus transportation between the Ranch and Great Falls International Airport and are included in the premium camp fee- \$550/scout.

### Arrival

Upon arrival, crews will be met by MOHAB program staff to begin the process of check-in, logistics, medical re-check and program orientation. Crews will be

assigned dormitory rooms for their stay at base camp. An opening program will be conducted at base camp for crews on their first night's stay.

**Proposed Itineraries**

The table on the next page outlines, the 5-day, 4 ½-day, and 4-day trek itineraries for MOHAB. These itineraries do not include pre-trek or post-trek excursions that crews may choose to take while in Montana.

(Next Page)

# Leaders Guide

# MONTANA HIGH ADVENTURE BASE

Theodore Roosevelt Memorial Ranch, Dupuyer, MT

Trek Table: 5 - Day ... 4 ½ - Day ... 4 -Day

			ITINERARY											
			5 day itinerary			4 1/2 day itinerary			4 day itinerary					
Day	Trek Itinerary	Comments	Modules:			A	A	A	A - B	A - B	A - B	A - D	A - D	A - D
Thursday	Arrival Check-In Opening Program	Arrive MOHAB. Orientation and welcome to Montana. Opening Program.	Lay of the Land			Lay of the Land			Lay of the Land					
Friday	Base / Trail	Training, trek prep, and/or off property	1/2 day Training			1 day Training			1 day Training					
Saturday	Base / Trail	Training, trek prep, and/or off property	Bob Marshall Wilderness			Bob Marshall Wilderness			Bob Marshall Wilderness			1/2 day Training		
Sunday	Trail	Off-property												
Monday	Trail	Off-property												
Tuesday	Trail	Off-property												
Wednesday	Trail / Base / Close	Off trail. Optional training, clean-up, prepare for departure. Closing program.												
Thursday	Departure	Dorm Room / Campsite Inspection Depart after breakfast for GTF	H O M E B O U N D											

TRAINING MODULES									
Pre-Trek Mandatory Training	A	A	A	A	A	A	A	A	A
Pre-Trek Optional Training				B	B	B	B	B	B
Pre-Trek Optional Training							C	C	C
Post-Trek Optional Training	D	D	D	D	D	D	D	D	D
MODULE A - Mandatory Training	Map & Compass/Trek Selection, Bear Aware, Leave No Trace								
MODULE B - Optional	Training: programs selected by Crew								
MODULE C - Optional	Training: programs selected by Crew								
MODULE D - Optional	Shooting Sports: Rifle, shotgun, archery								

**Trek Dates**

The trek dates include one week of training for MOHAB and B&C staff. The staff training includes all necessary adult training, safety, emergency procedures, and program training required to support the BSA certified high adventure program.

Comments		
n/a	Staff Training Week	Staff Week
Week 1	Contingent #1	Up to 2 crews
Week 2	Contingent #2	Up to 2 crews
Week 3	Contingent #3	Up to 2 crews
Week 4	Contingent #4	Up to 2 crews
Week 5	Contingent #5	Up to 2 crews

**Pre-Trek Programs**

Due to the remote nature of the Bob Marshall Wilderness Complex and East Front of the Rockies country and the unfamiliarity that many crews will have with this environment, the following programs are mandatory. These programs will give each crew a jump start to their high adventure to ensure their safety and minimize risk.

1. Lay of the Land - conducted by TRMR staff. This program will be part of the opening program crews receive on their first night at MOHAB. A brief history of B&C, their purpose and mission, Ranch and RWCC operations will be given as well as an overview of the Rocky Mountains' Front Range environment.
2. Map and Compass / Trek Selection - conducted jointly by MOHAB staff. This training will ensure each crew understand their trek route; how to use map, compass and GPS. GPS units will be required equipment for each crew.
3. Be Bear Aware - The Bob Marshall Wilderness and surrounding landscapes have both Black and Grizzly bears. The objective of this training is to ensure crews know what to do to reduce human/bear conflicts. MOHAB staff will review with each crew bear encounter prevention techniques used in the Northern Continental Divide Ecosystem and also at Philmont Scout Ranch.
4. Leave No Trace - facilitated by MOHAB staff. Crews will receive Leave No Trace basic training specific to the rules and regulations in the Bob Marshall Wilderness Complex and surrounding public lands.

### Base Camp Post-Trek Programs

The RWCC staff has developed several programs that would be of interest to crews while at base camp. These programs are designed to educate and stir the interest of Scouts about wildlife, conservation, and the environment. Depending on a crew's trek schedule, crews should take advantage of these programs:

- Tracks, Scat and Sign
- Furbearers of the Rocky Mountain Front
- Birds of the Rocky Mountain Front
- Shooting Sports
- Plant Identification
- Conservation Project

Similar to Philmont's staffed camp programs, these interactive and informative programs are available to crews as a pre-trek or post-trek activity depending on the chosen length of the backcountry trek.

Meals

Overview

There is a limited amount of refrigeration space for crew food at base camp. Crews will be encouraged not to bring foods that require refrigeration during their stay at base camp. Crews will be served three meals per day and cracker barrel while at base camp. Crews arriving by vehicle may bring along coolers to store extra food items.

Base Camp Meals

All meals at base camp will be prepared by RWCC kitchen staff. Units will not have the option to prepare meals on their own inside the kitchen. Due to local health regulations and BSA standards, the kitchen is off limits to Scouts. If refrigeration is necessary for medical reasons, crew advisors must notify the MOHAB Camp Director upon their arrival at base camp.

Trail Meals - 2011

The premium program fee for includes backcountry trail meals for crews. These meals are designed to provide ample calories per day a variety of choices and accommodate dietary needs.

**Logistics and Planning**

---

This information is provided to assist in planning a visit to the Montana High Adventure Base. Information provided is subject to change. Call the MOHAB base camp for updated information - 406-472-3311 or email [conservationeducator@boone-crockett.org](mailto:conservationeducator@boone-crockett.org)

Boone & Crockett Contact Information

Base Camp Physical Address & Phone
BOONE AND CROCKETT CLUB Elmer Rasmuson Wildlife Conservation Center 388 Upper TRM Ranch Road Dupuyer, MT 59432 406-472-3311 (office) 406-472-3313 (fax)

# Leaders Guide

## MONTANA HIGH ADVENTURE BASE

Theodore Roosevelt Memorial Ranch, Dupuyer, MT

### Great Falls Area Council BSA Contact Information

Great Falls Area Council	Montana Council High Adventure Committee
<b>Professional Staff:</b>  Jack Sherick Field Director, Montana Council 820 17 <sup>th</sup> Ave. S. Great Falls, MT 59405 406-761-6000 (Office) 406-868-5662 (Cell) jsherick@bsaemail.org	<b>Volunteers:</b>  Ryan Jordan Chairman of Montana Council High Adventure Committee 1113 Brentwood Avenue Bozeman, MT 59718 406- 582-8673 (Home) Ryan Jordan [ryan@backpackinglight.com]

### Governmental Agencies

Bob Marshall Wilderness	Glacier National Park
Lewis and Clark National Forest Service Office Rocky Mountain Ranger District Office 1102 Main Ave NW, Box 340 Choteau MT 59422 406-466-5341 Recommended Contact: Nancy Denning <b>Key Points:</b> US Forest Service Projects including 50-miler projects and Eagle Scout Service Projects	Glacier National Park National Park Service St. Mary's Visitor Center 406-732-7750  National Park Service West Glacier Main Office 406-888-78000

### Transportation

Airline Connections to Great Falls, MT	Local Ground Transportation
Airlines servicing Great Falls with their respective Group Desk phone numbers:  <ul style="list-style-type: none"> <li>•Continental Airlines: 800-525-1700</li> <li>•Delta Airlines: 800-532-4777</li> <li>•United Airlines: 1-800-864-8331</li> </ul> Typical requirements call for groups to be at 10 or more in size. Expect NO MORE than 11-month lead times for reservations. Per-person prices seem to be in line with the www.Orbitz.com lowest prices.	<b>Charter Bus Services (47 or 49-passenger bus services):</b>  Hall Transit Charter Service Inc 2620 Upper River Road Great Falls, MT 59405 406-452-0082 Approximate rates: \$2.17 per mile plus \$.25 per mile fuel surcharge \$420 per day Mileage to and from drop-off point applies  Laird Leisure Travel (Coach rental) \$2.75 per mile or \$490 per day, whichever is greater Mileage to and from drop-off point applies 49-passenger bus service 406-761-9700

Travel Agent	Local Van Rental
<p>Golden Travel Services                      Phone: 832-877-1115                      Fax: 713-721-7850                      Email: <a href="mailto:goldentravelservices@earthlink.net">goldentravelservices@earthlink.net</a>                      Web: <a href="http://goldentravelservices.atcallegre.com">http://goldentravelservices.atcallegre.com</a></p> <p>Independent Travel Agent - America's Travel Companies, Inc.</p>	<p>Alamo Rental – Great Falls Intl Airport</p> <p>15-person van: \$900/wk + applicable taxes, fees</p> <p>8-person Suburban: \$600/wk + applicable taxes, fees</p> <p>Note: Call Alamo in Great Falls to reserve 15-person van. It is not a vehicle offered from their website. Prices are subject to change.</p>
Travel Websites	Other Helpful Websites
<p><a href="http://www.travelocity.com">www.travelocity.com</a></p> <p><a href="http://www.orbitz.com">www.orbitz.com</a></p> <p><a href="http://www.delta.com">www.delta.com</a></p> <p><a href="http://www.united.com">www.united.com</a></p>	<p><a href="http://www.samhoustonbsa.org">www.samhoustonbsa.org</a></p> <p><a href="http://www.boone-crockett.org">www.boone-crockett.org</a></p> <p><a href="http://www.visitmt.com">www.visitmt.com</a></p> <p><a href="http://www.discoveringmontana.com">www.discoveringmontana.com</a></p> <p><a href="http://www.fs.fed.us/r1/lewisclark">www.fs.fed.us/r1/lewisclark</a></p> <p><a href="http://www.fwp.state.mt.us">www.fwp.state.mt.us</a></p>

**Recommended Travel Itinerary**

Travel to Great Falls, Montana and MOHAB is an all day travel event for crews. Crews should plan on leaving for Great Falls on the first morning flight available from point of departure with an expected mid-afternoon arrival in Great Falls between 2:30 p.m. and 3:00 p.m. Mountain Time. It will take approximately 2 ½ hours to travel from the Great Falls Airport to MOHAB arriving between 5:00 p.m. and 5:30 p.m. Mountain Time.

Crews should plan on departing from Great Falls on the first available flight after 2:00 p.m. Mountain Time. MOHAB staff will depart base camp at 9:00 a.m. for the 2 ½ hour ride to Great Falls International Airport arriving around 12:30 p.m. Mountain Time.

**Layover / Plane Transfer**

If crews fly Delta Airlines, they will have a layover and plane transfer in Salt Lake City. If flying United Airlines, layover and transfer is in Denver, Colorado. Again, arrival in Great Falls is mid-afternoon. We recommend Scouts purchase lunch at the airport during their layover.

# Leaders Guide

## MONTANA HIGH ADVENTURE BASE

Theodore Roosevelt Memorial Ranch, Dupuyer, MT

Sample Itinerary from Houston Texas

Day	Depart	Arrive	Carrier/Location	Comment
Saturday		6:00 am	Bush Int'l Airport	Crew meets at airport
	7:34 am	10:00 am	Delta FLT 1647	Depart Houston for Salt Lake City Transfer planes
	12:55 pm	2:23 pm	Delta FLT 3852	Arrive Great Falls Airport
	2:30 pm	3:00 pm	Great Falls Airport	Deplane, pickup gear, load vans
	3:00 pm	5:30 pm	Dupuyer MT	2½ hr ride to MOHAB
	5:30 pm	6:00 pm	MOHAB	Welcome and brief orientation, unload gear, dorm room assignment, logistics, medical re- check.
	6:00 pm	7:00 pm	MOHAB	Dinner
	7:00 pm	9:00 pm	MOHAB	Opening Program & Lay of the Land
Sunday To Friday			MOHAB Bob Marshall WA	Various base camp programs and training Treks into the Bob Marshall Wilderness
Saturday	7:00 am	8:00 am	MOHAB	Breakfast
	8:00 am	10:00 am	MOHAB	Clean rooms, load gear, check-out, dorm room inspection
	10:00 am	12:30 pm	Great Falls Airport	Depart MOHAB; 2½ hr ride to Great Falls
	12:30 pm	2:30 pm	Great Falls Airport	Unload gear, airline check-in, security check
	2:50 pm	4:15 pm	Delta FLT 3819	Depart Great Falls for Salt Lake City
	4:15 pm	4:59 pm	Salt Lake City	30 minute layover / change planes
	4:59 pm	8:58 pm	Delta FLT 1743	Depart Salt Lake for Houston
	8:58 pm		Bush Int'l Airport	Arrive Houston

### Base Camp Program Offerings

---

#### Tracks, Scat and Sign

Wild animals are elusive and hard to observe in the wild, but you can discover their behavior from the signs they leave behind. Join us to learn nature detective skills that will tell you which animals are living on the TRM ranch from these clues they leave behind.

### Furbearers of the Rocky Mountain Front

Take a look at the furs and skulls of some of the furbearing animals that call the Rocky Mountain Front home. Learn how these animals live, what they eat, what special adaptations they have, and key identifying characteristics of each. Take a hike to discover first hand what their various habitats of the TRM ranch provide these animals, the corridors they use, their roles in this ecosystem and how people may benefit or harm their populations.

### Birds of the Rocky Mountain Front

These birds along with many others call this area home for at least part of the year. Learn to identify these birds from their songs, flight patterns, wing span, body shape and size. Hike across the landscape with binoculars, spotting scopes, a bird checklist and bird guides to see how many birds you can add to your list. Look for nests and signs of bird activity while listening for their calls as we wander through various habitats of the TRM ranch. You may also be able to learn about and take part in avian research projects that occur here frequently.

### Shooting Sports

Hone your skills or acquire new skills marksmanship at our shooting range. Join hunter education instructors to learn about the equipment, safety issues, and ethics of use both for hunting and target shooting. Arrangements for this program must be made ahead of time with the MOHAB program director.

### Plant Identification

Join us to learn simple steps for identifying plants, what to look for and where to look. Identify plants in the field, collect and press specimens for your own herbarium, learn how to interpret the landscape from the plant communities found at the TRM ranch and utilization of these plant communities by wildlife and people.

### Conservation Projects

Join us to learn about and take part in weed management, stream restoration and enhancement projects, trail maintenance and numerous other activities that will help maintain this environment and sustain its resources for future generations of people and wildlife.

Other Excellent Outdoor Opportunities near MOHAB

Glacier National Park



Museum of the Plains Indians  
Blackfoot Indian Reservation  
Browning, MT



Lewis & Clark Interpretive Center  
Great Falls, MT



Waterton Provincial Park  
Alberta, Canada

